

Quick User Guide

DB2003

Remote Control for RVR FM Radio Transmitters

→ BEFORE YOU USE THIS PRODUCT ←

In order to be able to enjoy all the benefits of owning your new DEVA product, please verify first that the latest software and firmware release were installed.

Visit www.devabroadcast.com/downloads for the most recent software and firmware downloads, prior the installation.

This Quick user guide will make the installation of **DB2003** quick and easy. Applying these principles, you can simplify the process and save yourself extra time and effort. **For more information about the Safety precautions and the Operating environment recommendations please refer to the User Manual.**

STEP 1

Connection

1. Connect the device to a local network or to the Internet by a cable with an RJ-45 connector;
2. Connect the DB2003 to the power supply.

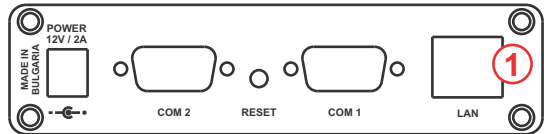
RECOMMENDATION: Preferably, connect the device to a DHCP Server network from which DB2003 will receive an IP address.

STEP 2

Network Settings

After connecting the network cable the LED 'LAN' indicator (1) located on the rear panel must be ON or flashing. These are the Default Network Settings:

DHCP: Enabled
IP: Assigned by DHCP
Mask: Assigned by DHCP
Gateway: Assigned by DHCP
DNS: Assigned by DHCP
HTTP Port: 80



NOTE: DB2003 has a DHCP assigned IP address by default. In order to establish a communication, your PC should be connected to the same Sub network as the device. For further information consult with your network administrator.

STEP 3

Network discovery for Windows 7

Network discovery is a network setting that defines whether your computer can see (find) other computers and devices on the network and whether other computers on the network can see your computer. By default, Windows Firewall blocks network discovery but you can enable it.

If you have already enabled this function on your computer just open a new Explorer bar and click on (1). The device must be displayed.

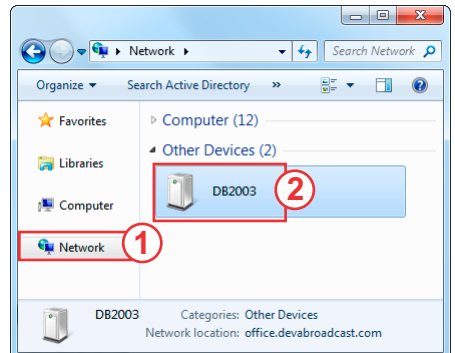
1. Open Advanced sharing settings by clicking the Start button, and then on "Control Panel". In the search box, type "network", click "Network and Sharing Center", and then, in the left pane click "Change advanced sharing settings";

2. Select your current network profile;

3. Click **Turn on network discovery**, and then click Save changes. If you're prompted for an administrator password or confirmation, type the password or provide confirmation.

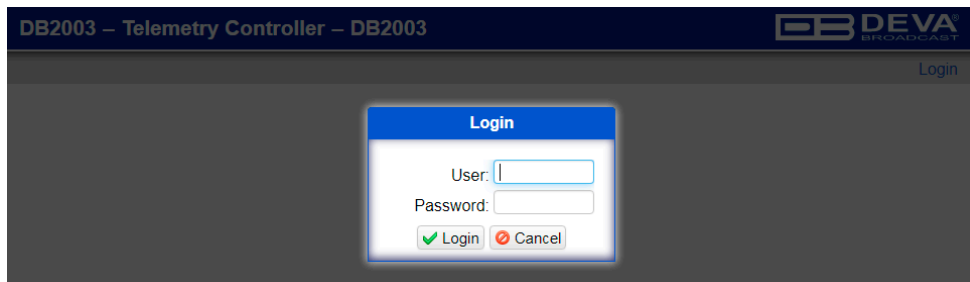
4. To access the device open a new Explorer bar and click on (1). If you have successfully enabled the network discovery option, the device will be displayed.

A double click on (2) will open a new WEB browser window requiring username and password. Default values are - Username: admin, Password: pass.



STEP 4**WEB Interface Login**

DB2003 provides you with a protected access to the device settings. The device serves only one user at a time, thus username and password will be requested upon login.



You can choose between two types of log in:

1. **ADMINISTRATOR** – which will give you full control over the settings and can remotely manage the monitored devices. (username: *admin*, password: *pass*);
2. **USER** – this type of log-in will allow you only to monitor the device. It has no access to settings and cannot change the operation mode of the DB2003 or influence monitored devices. (username: *user*, password: *pass*).

In order to make the necessary adjustments to the device please log in as **ADMINISTRATOR**.

STEP 5**Device Settings**

After a successful log-in go to the Settings > Device tab. This tab lists the settings influencing the operation of the DB2003 but having no direct influence on the monitored device, as well as its selection and connection.

Device Status

FW: 1.2.1695.2019/02/15
Library Version: 1.2.1692.2019/02/01
Serial: 23TJ101E
Device Time: 13 Mar 2019 07:36:33
Device Uptime: 00:39:07
Storage Used / Free: 288.00 KB / 7.20 GB
GPO: ● ● ●

Network Status

MAC: 00 04 A3 54 CE A4
IP Type: Assigned by DHCP
IP: 192.168.20.239
Network Mask: 255.255.255.0
Gateway: 192.168.20.1
Primary DNS: 192.168.20.5
Secondary DNS: 0.0.0.0

General [Reboot Device] [Revert] [Save]

Alias: DB2003
Timezone: UTC +03.00
Admin Name: admin
Admin Password: ●●●●
User Name: user
User Password: ●●●●
Factory Defaults: [Restore All Except IP]

Network [Revert] [Save]

DHCP: [Disable] [Enable]
IP Type: Assigned by DHCP
IP: 192.168.1.2
Network Mask: 255.255.255.0
Gateway: 192.168.1.1
Primary DNS: 192.168.1.1
Secondary DNS: 192.168.1.1

Firmware Update

Current Version: 1.2.1695.2019/02/15
Firmware File: [Upload]

Storage [Format] [Revert] [Save]

Used: 288.00 KB Free: 7.20 GB
Warning Level: 10 % [Disable] [Enable]

STEP 6**Connection Scenarios**

DB2003 is not limited to a single connection scenario. To proceed further it is necessary first to define your Telemetry Setup. It is of great importance to supply the necessary cables as well as their corresponding connectors. Interconnect DB2003 with all monitored devices and proceed to **Step 7**. For a detailed explanation about Cables, Connectors and Connection Scenarios, please refer to the complete User Manual.

STEP 7**Telemetry Port Settings**

In the Port Settings group, you have to specify the device the DB2003 is to monitor/control and how to connect to it. Setting an Alias allows the user to recognize the different monitored devices. This is where you enable/disable the port.

The screenshot displays the 'DB2003 – Telemetry Controller – DB2003' web interface. The top navigation bar includes 'Home', 'Settings', 'Device', 'Log', and 'Port 1 | Port 2 | Port 3'. The 'Session: 02:53' and 'Logout' options are visible on the right. The main content area is titled 'Telemetry Port 1 - General' and features a 'Revert' and 'Save' button. A status bar indicates 'State: Run' (with a green dot), 'Alias: Monitored 1', and 'Model: TX 10 KPS-CA'. The configuration fields are as follows:

Telemetry Port:	<input type="checkbox"/> Disable <input checked="" type="checkbox"/> Enable	Alias:	<input type="text" value="Tx10kW"/>
Interface:	<input type="text" value="Com port 2 as RS485 half duplex"/>	Serie:	<input type="text" value="Plug-in KPS-CA (air cooled)"/>
Bus speed:	<input type="text" value="115200"/>	Model:	<input type="text" value="TX 3 KPS-CA"/>
Bus address:	<input type="text" value="18"/>	Logger:	<input type="text" value="Every 1 minute"/>
Edit Dangerous Parameters:	<input type="text" value="Disable"/>		

Below the main settings, there is a section for 'Telemetry Port 1 - Dayparts' with 'Graph', 'Revert', and 'Save' buttons.

NOTE: The set interface must match the one which is physically connected. The address and speed of the connection must correspond to the ones set in the monitored device.

Thank you for choosing DEVA!

Please refer to the User manual for detailed information on how to configure and explore your device.