

Quick User Guide

Band Scanner PRO

FM Band Spectrum Analyzer
and RDS/RBDS Decoder-Reader

→ **BEFORE YOU USE THIS PRODUCT** ←

In order to be able to enjoy all the benefits of owning your new DEVA product, please verify first that the latest software and firmware release were installed.

Visit www.devabroadcast.com/downloads for the most recent software and firmware downloads, prior the installation.

This Quick user guide will make the installation of Band Scanner PRO quick and easy. Following these steps will simplify the process and save you extra time and effort. **For more information about the Safety precautions and the Operating environment recommendations please refer to the User Manual.**

STEP 1

Device Manager Software Installation

In order to establish communication with Band Scanner PRO you have to install “**Band Scanner**” Software.

We recommend you to install the software before connecting the device to the computer.

1. Use the Installation file which can be downloaded from www.devabroadcast.com/downloads
2. Find “**Band Scanner PRO**” folder, double click on the installation file to launch the *Wizard*;
3. Accept the default recommendations and click “**Next>**” at the end of each step;
4. When asked to place an icon on the computer *Desktop and Install the USB Drivers*, click on the check boxes;
5. Finally, select NOT to launch the program;
6. Close the software installation utility;
7. A shortcut to the Software will appear on the desktop of your computer.

STEP 2

USB Port Installation

Once the software is installed on the computer, a special USB port driver must also be installed in order for the Band Scanner Pro to be accessible through the front-panel USB port.

Unless you have deselected the “*Install drivers automatically*” option from the installation wizard, or something went wrong during the installation process, the USB port drivers should be installed automatically on your computer.

If the USB drivers are not installed the led light labeled “ACTIVE”, placed on the rear panel of the device, will start to blink. In that case we recommend you to uninstall the software and repeat **Step 1** again.

NOTE: If due to unexpected reason the USB driver could not be installed automatically on your computer, refer to the complete **User Manual**.

STEP 3

Device Connection

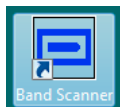
After completing the steps listed above, Band Scanner Pro will be ready for usage and no additional adjustments or settings will be required except in the occasions when:

- you would like to measure the band off-air, an external FM antenna should be connected to the Antenna Input;
- MPX or RDS signal have to be analyzed and the signal must be applied to the MPX/RDS Input.

NOTE: The maximum input RF signal to the Antenna Input is 100 dB μ V. Do not connect the Band Scanner Pro directly to any FM Transmitter’s MONITOR Output - this would damage it irrevocably.

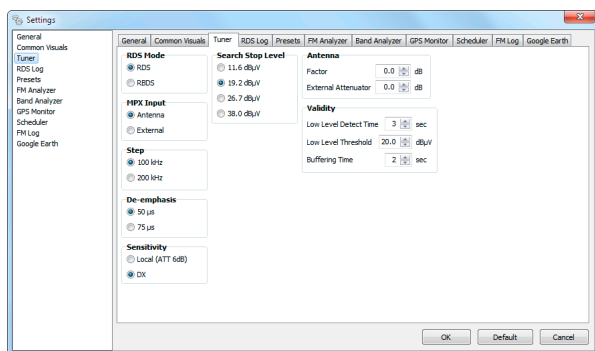
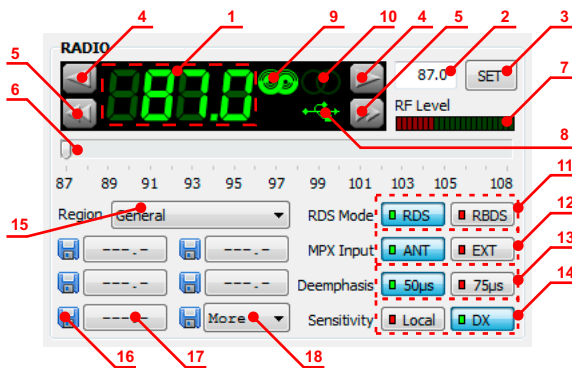
STEP 4

Band Scanner PRO Software



After connecting the Band Scanner PRO to the USB port of any Windows® based PC, where the software is already installed, the product is ready to be used and does not require any additional adjustments or settings. The software will restore automatically the unit to the initial data.

1. **Frequency Indicator** – Shows the working frequency of the unit;
2. **Working frequency entering cell**;
3. **The set button** will adjust the unit to the frequency defined in cell [2];
4. **UP** and **DOWN** buttons for **adjusting the tuner's frequency**;
5. **SEEK UP** and **SEEK DOWN** Buttons;
6. **Slider for manual adjustment of the frequency**;
7. **Field Strength Indicator**;
8. **USB connection indicator**;
9. **RDS Signal Presence**;
10. **Stereo Signal Presence**;
11. **RDS/RBDS Mode Selector**;
12. **MPX INPUT Signal Selector** – Antenna In or MPX/RDS (Extrenal) Input;
13. **Deemphasis Selector** for the Demodulator - 50µs or 75µs;
14. **Sensitivity Selector** – Local (6dB Attenuator) or DX (no Attenuator);
15. **Region Selector**;
16. **Quick Preset Save** buttons – By applying this option you can assign easy for access memory presets;
17. **Quick Preset Recall** buttons – Intended to serve as a quick access to favorite stations, preset button needs no more than a click;
18. **Quick Preset Recall List** – The first 5 frequencies are arranged under fast recall buttons. The rest are placed under Recall List button.



Step – You can choose the frequency adjustment step. Usually it is 100kHz for Europe and 200kHz for USA;

Sensitivity

- **Local mode** is recommended in case the device used is placed close to the transmitter sites. It will enable 6 dB attenuation of the RF input stage;

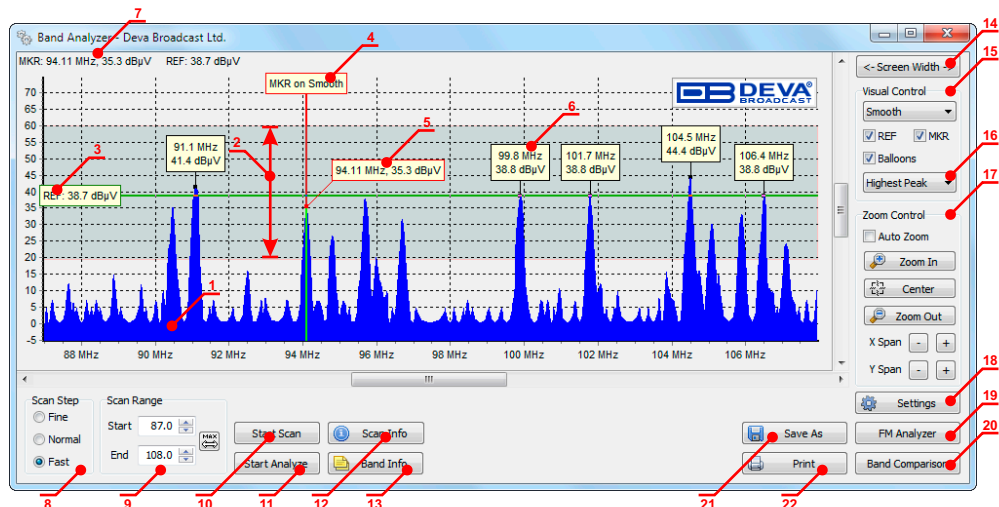
- **DX mode** is recommended when weak signal is received and analyzed. The use of this mode will disable any input attenuation of the RF input;

Search Stop Level – Tuner sensitivity threshold is in Auto Search Mode;

Antenna - If known, Antenna Factor and/or External Attenuator could be specified here;

Validity - Low Level Detect Time is minimum required time for defining RF Level for High or Low according to Low Level Threshold.

NOTE: Some of the tuner settings are uninfluential when the Band Scanner Pro is used with MPX/RDS input signals.



1. **FM Band Spectrum** – the horizontal scale shows the frequencies and the vertical-their measured levels;
2. **Sensitivity zone** – This is the zone where the tuner is in seeking mode;
3. **Reference Level Marker.**
4. **By moving the Marker** along the Band Spectrum when the corresponding level for the frequency under it will be displayed;
5. **Marker Cross-point** – shows the corresponding level under the Marker;
6. **Peak Balloon** - Comprises information about the peak;
7. **Information for current Markers** – MKR and REF level;
8. **Band Scanning mode** – The software provides three different types of Band Scan- Fine, Normal and Fast;
9. **Scan Range** – Allows you to customize band scanning by setting the *IN* and *OUT* frequencies of the band;
10. Button for starting and ending the **scanning process**;
11. Button for starting and ending the **analyzing process**;
12. **Scan Info** – shows a balloon with all parameters applied on the last scan;
13. **Band Info** – Button for displaying up the information collected from the Band Analyze;
14. **Screen Width** button will expand the width of the form to match the width of the screen;
15. **Appearance buttons**;
16. **Peak Find Method Selector**;
17. **Zoom Controls**;
18. **Settings**;
19. **Button for fast recall of the FM Analyzer Tool**;
20. **Button for fast recall of the Band Comparison Tool**;
21. **Button for Saving the current graphic**;
22. **Button for Printing the current graphic.**

Please refer to the User manual for detailed information on how to configure and explore your device.